

DEVELOPED BY:



SIBILA  
HOUSE



PATMORE  
RESIDENCE





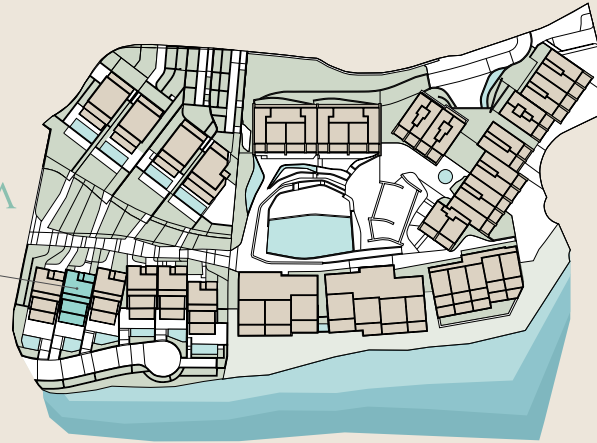




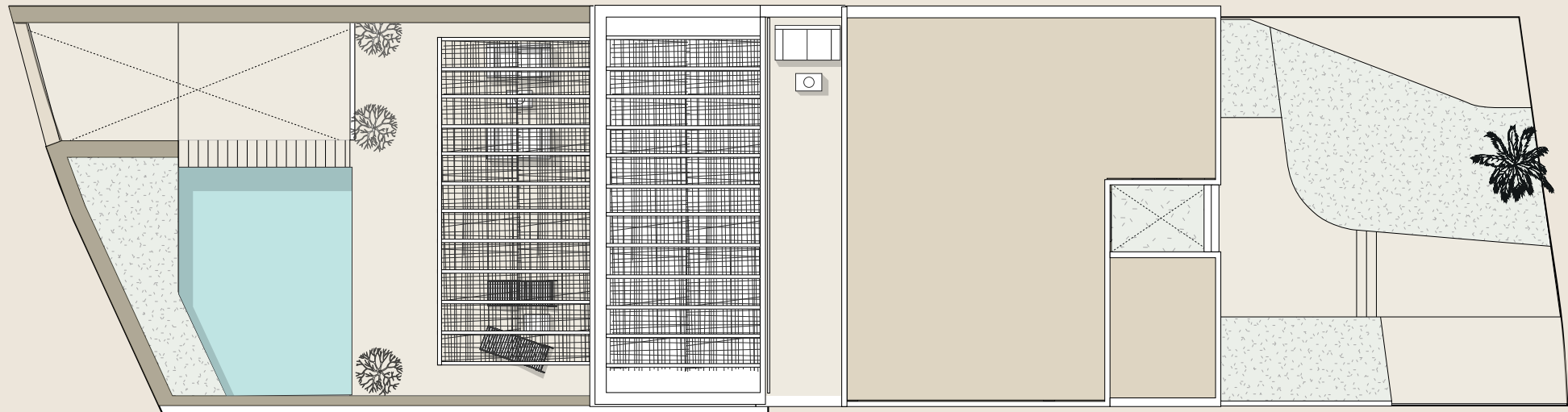
PATMORE  
RESIDENCE

# GENERAL ARRANGEMENT PLAN

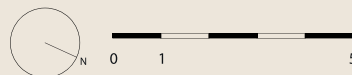
SIBILA  
HOUSE



Constructed surface area	653,84 m2
Private outdoor surface area	373,75 m2



DEVELOPED BY:



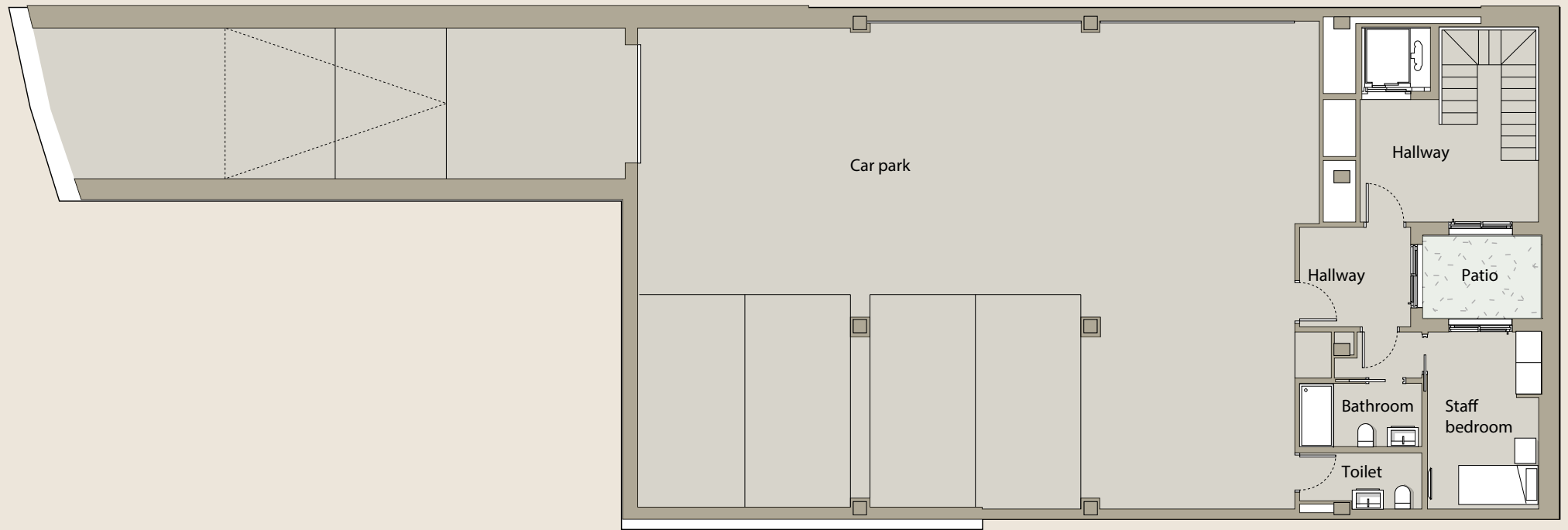
This plan is not a contractual document, it is merely illustrative and subject to technical, legal or commercial modifications by the project management team or the competent authority as a result of future project developments. The indicated surface areas of rooms and other elements are approximate and may be subject to verification or modification in future technical projects. The furniture shown in the interior and exterior plans is not included, and the fixtures and fittings in the properties will be as specified in the corresponding building specifications. All information and documentation shall be provided in accordance with Royal Decree Law 515/1989 and other complementary regulations, whether EU, national or regional.



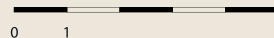
PATMORE  
RESIDENCE

# CAR PARK FLOOR - 230 m<sup>2</sup>

Car park	181m <sup>2</sup>	Hallway	10 m <sup>2</sup>
Hallway	6 m <sup>2</sup>	Patio	5,50 m <sup>2</sup>
Hallway	1,50 m <sup>2</sup>	Bathroom	4 m <sup>2</sup>
Staff bedroom	11m <sup>2</sup>	Toilet	3,50 m <sup>2</sup>
Staircase	6 m <sup>2</sup>		



DEVELOPED BY:



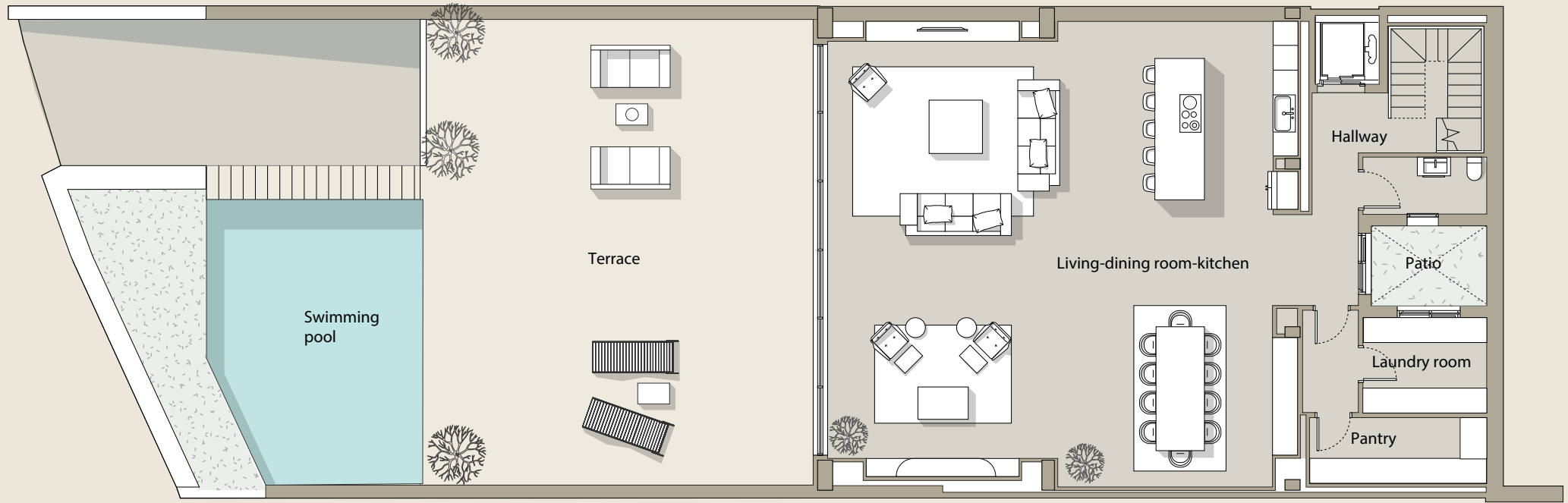
This plan is not a contractual document, it is merely illustrative and subject to technical, legal or commercial modifications by the project management team or the competent authority as a result of future project developments. The indicated surface areas of rooms and other elements are approximate and may be subject to verification or modification in future technical projects. The furniture shown in the interior and exterior plans is not included, and the fixtures and fittings in the properties will be as specified in the corresponding building specifications. All information and documentation shall be provided in accordance with Royal Decree Law 515/1989 and other complementary regulations, whether EU, national or regional.



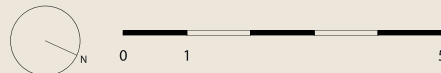
PATMORE  
RESIDENCE

### SWIMMING POOL FLOOR - 169,50 m<sup>2</sup>

Living-dining room-kitchen	128m <sup>2</sup>	Staircase	6 m <sup>2</sup>
Hallway	8 m <sup>2</sup>	Toilet	4 m <sup>2</sup>
Laundry room	6,50 m <sup>2</sup>	Terrace	108,50 m <sup>2</sup>
Pantry	7 m <sup>2</sup>	Swimming pool	30 m <sup>2</sup>
Hallway	3 m <sup>2</sup>	Garden	16m <sup>2</sup>
Patio	5,50 m <sup>2</sup>		



DEVELOPED BY:



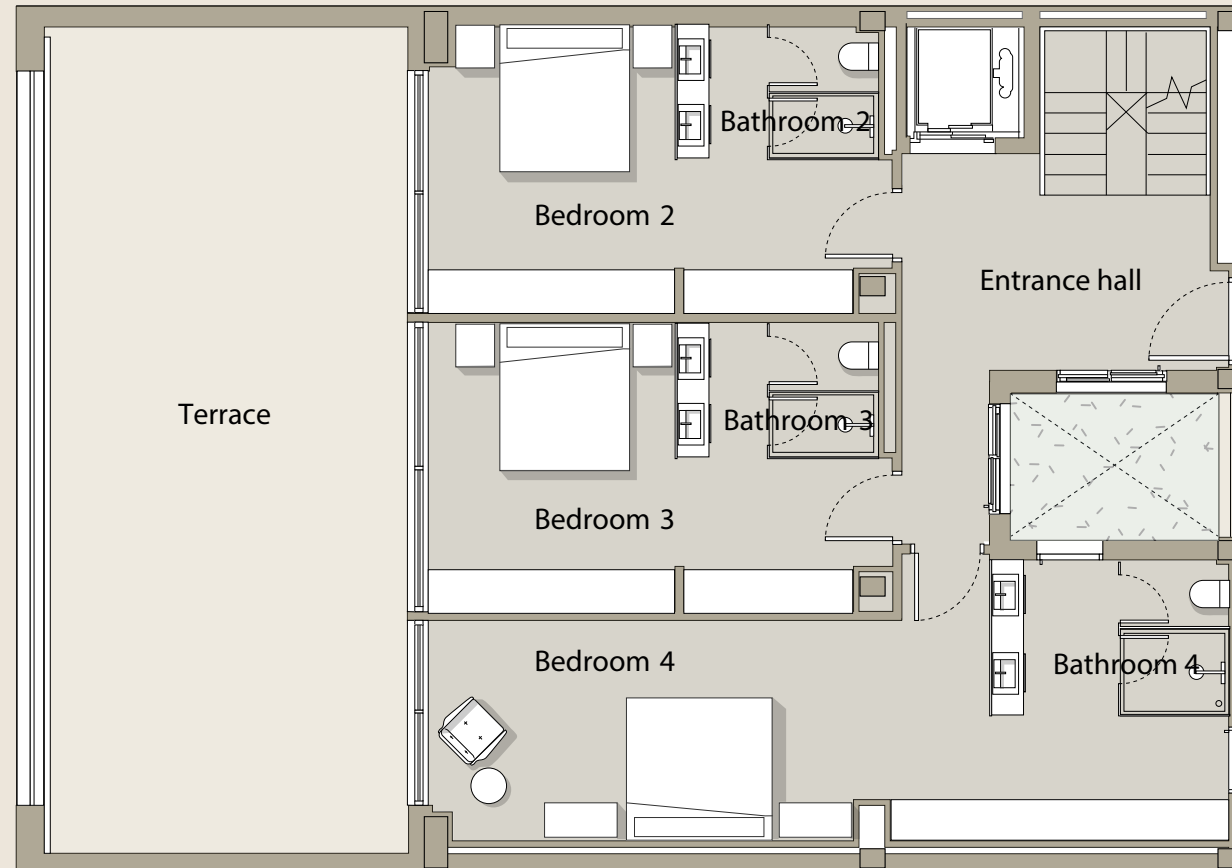
This plan is not a contractual document, it is merely illustrative and subject to technical, legal or commercial modifications by the project management team or the competent authority as a result of future project developments. The indicated surface areas of rooms and other elements are approximate and may be subject to verification or modification in future technical projects. The furniture shown in the interior and exterior plans is not included, and the fixtures and fittings in the properties will be as specified in the corresponding building specifications. All information and documentation shall be provided in accordance with Royal Decree Law 515/1989 and other complementary regulations, whether EU, national or regional.



PATMORE  
RESIDENCE

## GROUND FLOOR - 98,50 m<sup>2</sup>

Bedroom 4	28 m <sup>2</sup>	Staircase	4,50 m <sup>2</sup>
Bedroom 3	17,50 m <sup>2</sup>	Bathroom 3	5 m <sup>2</sup>
Bedroom 2	17,50 m <sup>2</sup>	Bathroom 2	5 m <sup>2</sup>
Entrance hall	13,50 m <sup>2</sup>	Terrace	56 m <sup>2</sup>
Bathroom 4	6 m <sup>2</sup>	Garden	116,50 m <sup>2</sup>



DEVELOPED BY:



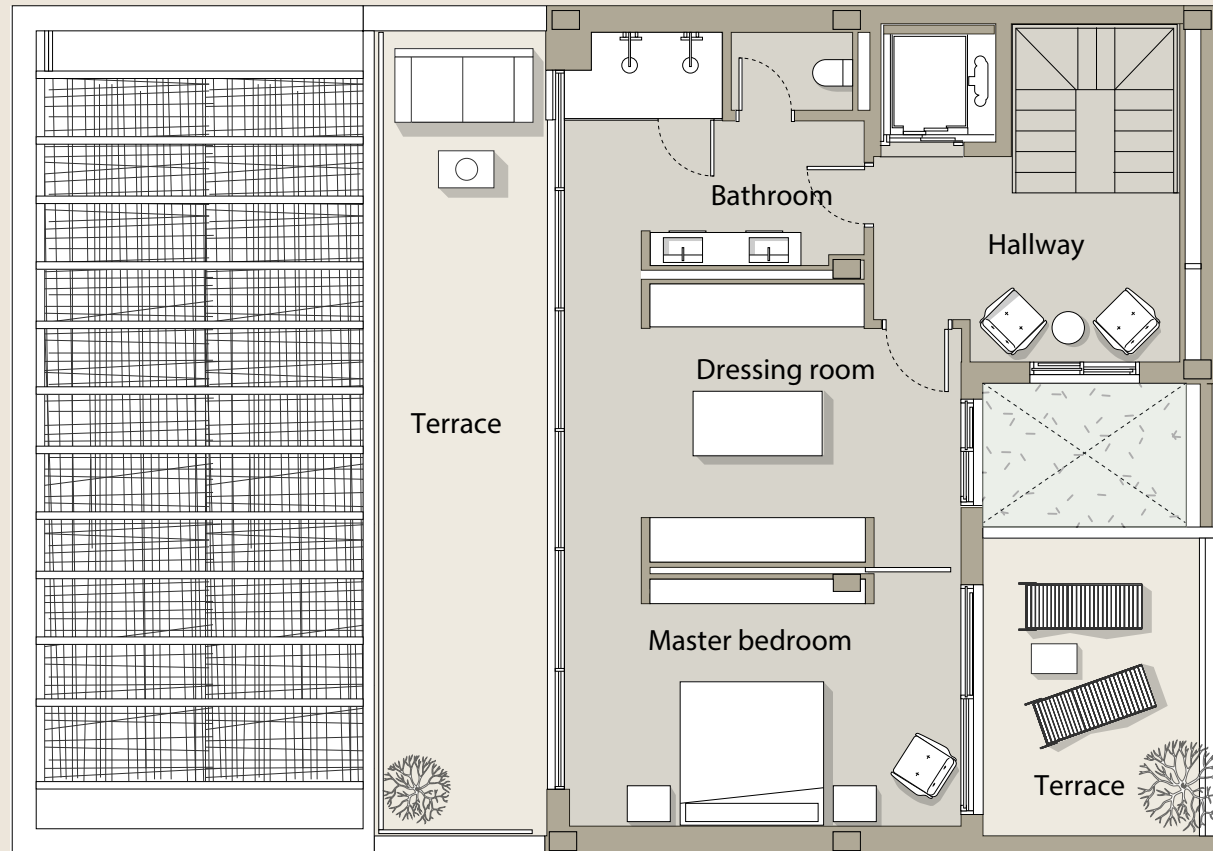
This plan is not a contractual document, it is merely illustrative and subject to technical, legal or commercial modifications by the project management team or the competent authority as a result of future project developments. The indicated surface areas of rooms and other elements are approximate and may be subject to verification or modification in future technical projects. The furniture shown in the interior and exterior plans is not included, and the fixtures and fittings in the properties will be as specified in the corresponding building specifications. All information and documentation shall be provided in accordance with Royal Decree Law 515/1989 and other complementary regulations, whether EU, national or regional.



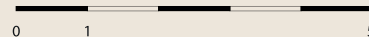
PATMORE  
RESIDENCE

# FIRST FLOOR - 56,50 m<sup>2</sup>

Dressing room	18 m2	Hallway	9,50 m2
Master bedroom	16,50 m2	Terrace	27 m2
Bathroom	12 m2	Rear terrace	13m2



DEVELOPED BY:



This plan is not a contractual document, it is merely illustrative and subject to technical, legal or commercial modifications by the project management team or the competent authority as a result of future project developments. The indicated surface areas of rooms and other elements are approximate and may be subject to verification or modification in future technical projects. The furniture shown in the interior and exterior plans is not included, and the fixtures and fittings in the properties will be as specified in the corresponding building specifications. All information and documentation shall be provided in accordance with Royal Decree Law 515/1989 and other complementary regulations, whether EU, national or regional.



# PATMORE

RESIDENCE

[www.patmore.es](http://www.patmore.es)

DEVELOPED BY:



RESIDENTIAL RESORT UNDER CONSTRUCTION - ENERGY EFFICIENCY LABEL PENDING.

\*Images are not contractual and are merely illustrative, subject to technical, legal or commercial modifications by the project management or competent authority. The computer-generated images of the façades, communal areas and other spaces are for guidance only and may be subject to verification or modification in the technical projects. The furniture shown in the interior and exterior plans is not included, and the fixtures and fittings in the properties will be as specified in the corresponding building specifications. All information and documentation shall be provided in accordance with Royal Decree Law 515/1989 and other complementary regulations, whether EU, national or regional. A complaints book is available to customers, as duly communicated and displayed in our offices. Version April 2024