

DEVELOPED BY:



NEREA  
HOUSE



PATMORE  
RESIDENCE





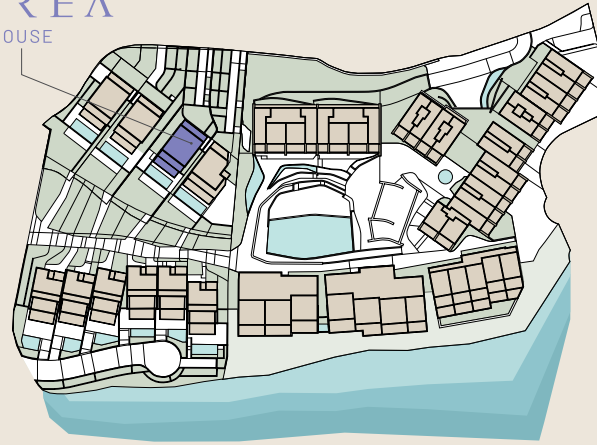




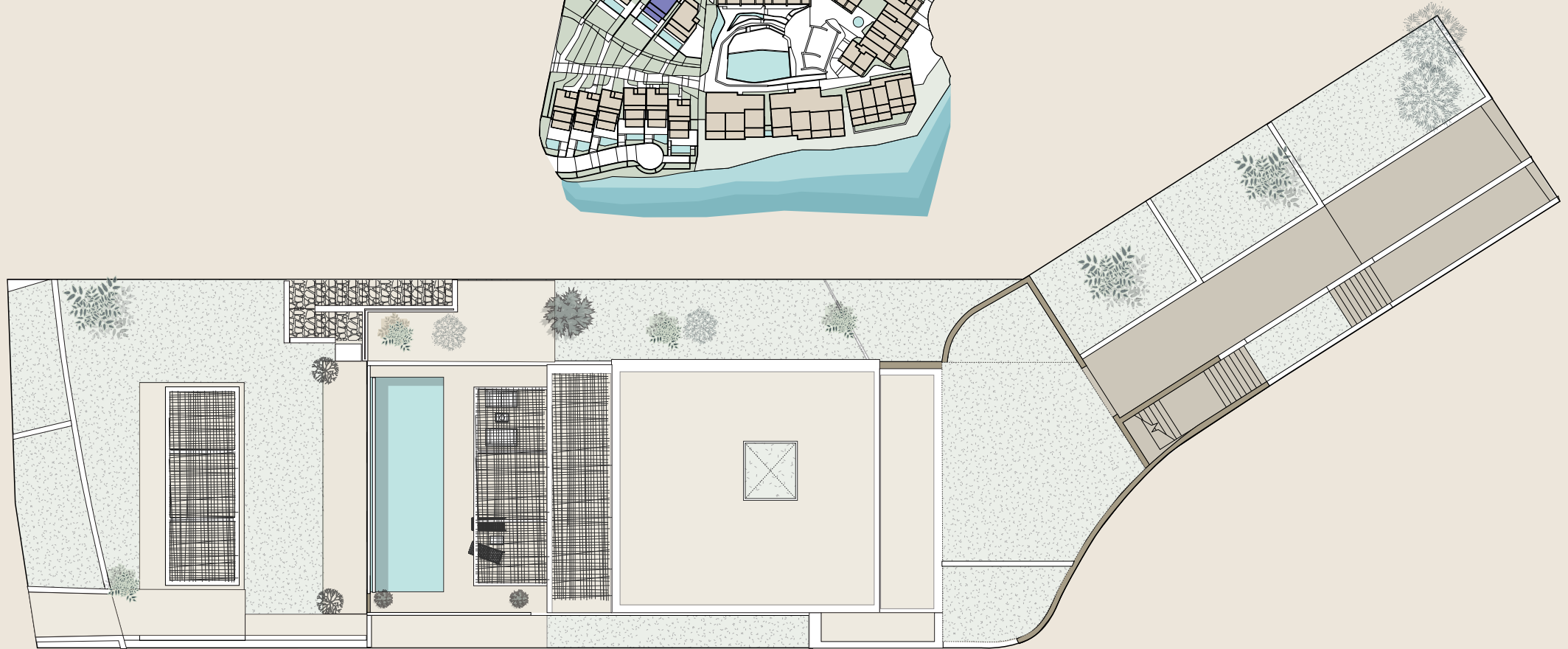
PATMORE  
RESIDENCE

# GENERAL ARRANGEMENT PLAN

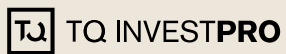
NEREA  
HOUSE



Constructed surface area	841,48 m <sup>2</sup>
Private outdoor surface area	869,53 m <sup>2</sup>



DEVELOPED BY:



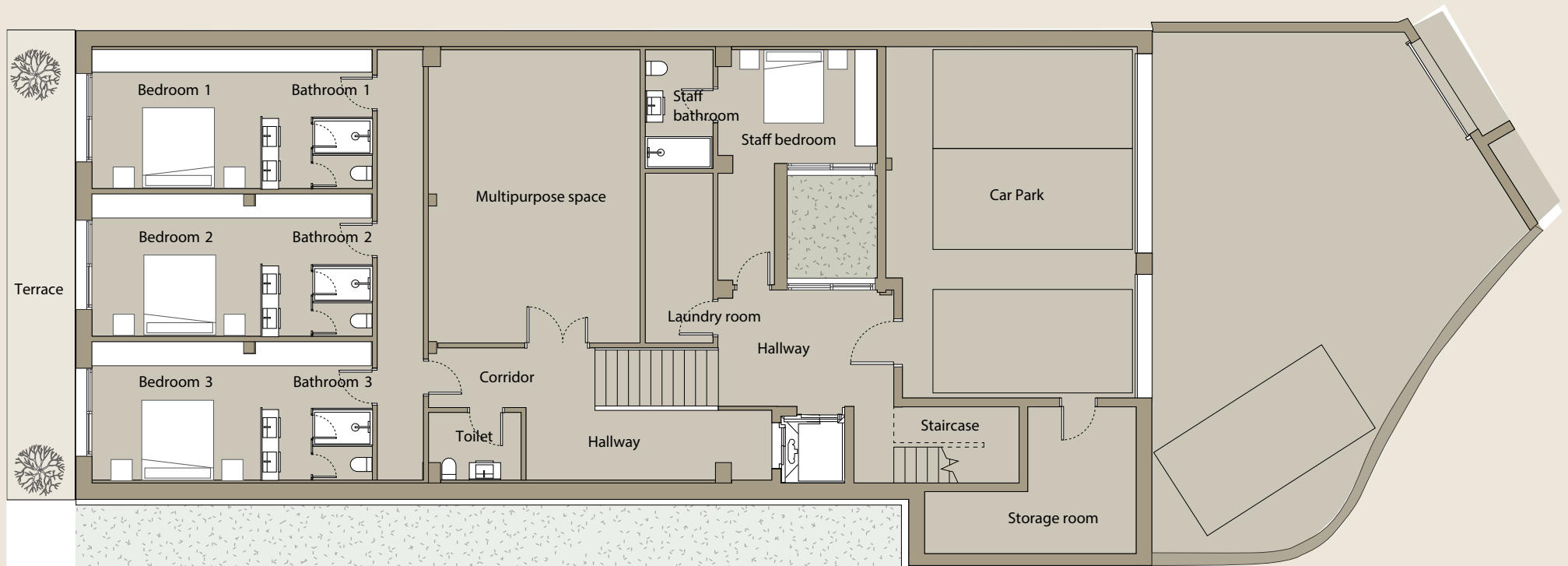
This plan is not a contractual document, it is merely illustrative and subject to technical, legal or commercial modifications by the project management team or the competent authority as a result of future project developments. The indicated surface areas of rooms and other elements are approximate and may be subject to verification or modification in future technical projects. The furniture shown in the interior and exterior plans is not included, and the fixtures and fittings in the properties will be as specified in the corresponding building specifications. All information and documentation shall be provided in accordance with Royal Decree Law 515/1989 and other complementary regulations, whether EU, national or regional.



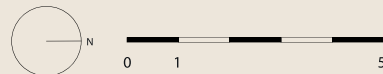
PATMORE  
RESIDENCE

## GARDEN FLOOR - 364 m<sup>2</sup>

Bedroom 1	19,50 m <sup>2</sup>	Bathroom 2	5 m <sup>2</sup>	Staircase	7,50 m <sup>2</sup>
Staff bedroom	15 m <sup>2</sup>	Bathroom 3	4,50 m <sup>2</sup>	Staff area	38,50 m <sup>2</sup>
Patio	5,50 m <sup>2</sup>	Staff bathroom	5 m <sup>2</sup>	Laundry room	7 m <sup>2</sup>
Car park	54 m <sup>2</sup>	Hallway	12,50 m <sup>2</sup>	Corridor	12,50 m <sup>2</sup>
Car park	91,50 m <sup>2</sup>	Hallway	21,50 m <sup>2</sup>	Storage room	14 m <sup>2</sup>
Toilet	3,50 m <sup>2</sup>	Bedroom 2	19,50 m <sup>2</sup>	Terrace	36,50 m <sup>2</sup>
Bathroom 1	4,50 m <sup>2</sup>	Bedroom 3	19 m <sup>2</sup>	Garden	183 m <sup>2</sup>



DEVELOPED BY:



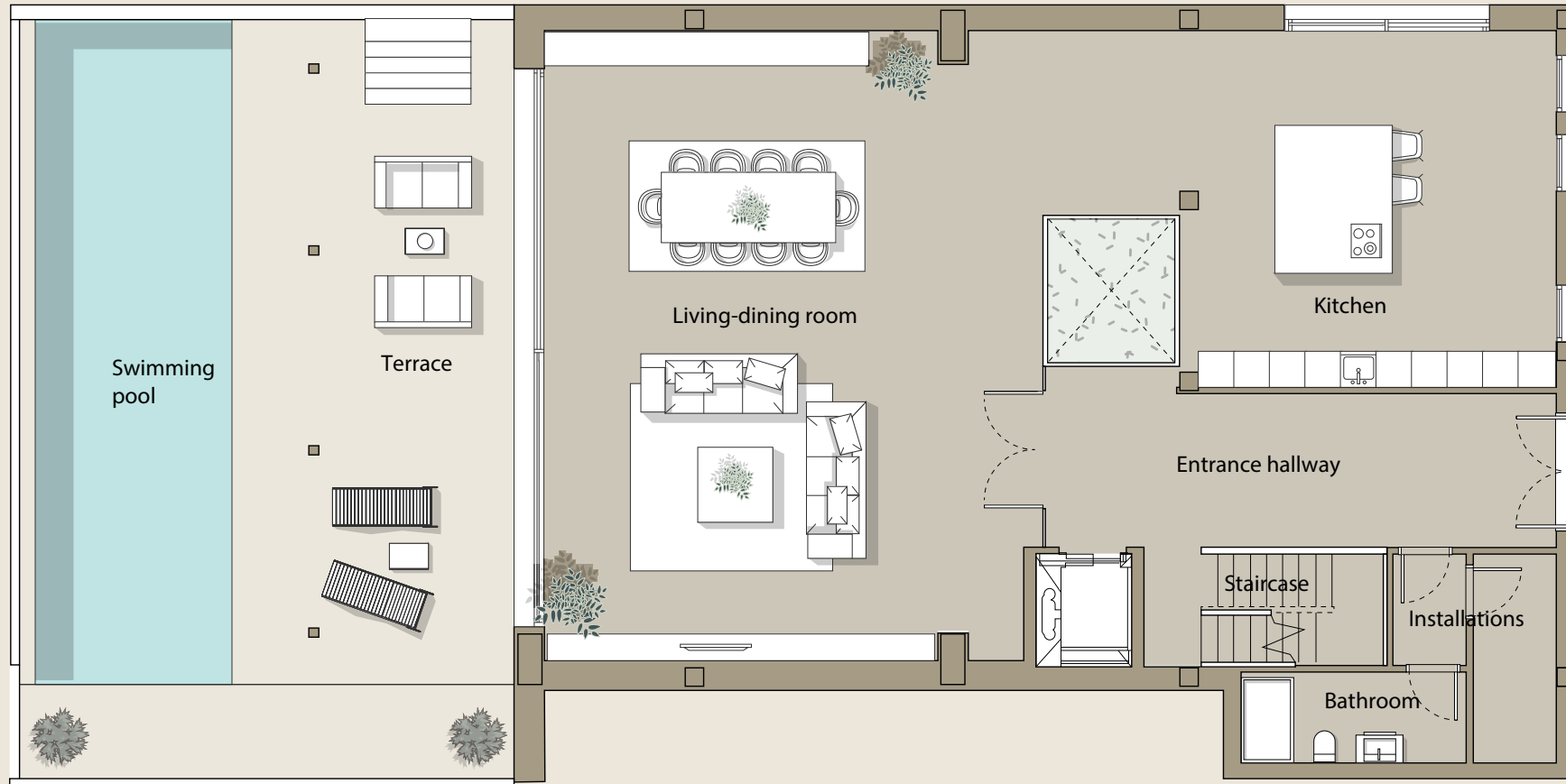
This plan is not a contractual document, it is merely illustrative and subject to technical, legal or commercial modifications by the project management team or the competent authority as a result of future project developments. The indicated surface areas of rooms and other elements are approximate and may be subject to verification or modification in future technical projects. The furniture shown in the interior and exterior plans is not included, and the fixtures and fittings in the properties will be as specified in the corresponding building specifications. All information and documentation shall be provided in accordance with Royal Decree Law 515/1989 and other complementary regulations, whether EU, national or regional.



PATMORE  
RESIDENCE

# SWIMMING POOL FLOOR - 187 m<sup>2</sup>

Kitchen	47 m <sup>2</sup>	Hallway	02 m <sup>2</sup>
Staircase	08 m <sup>2</sup>	Installations	05 m <sup>2</sup>
Entrance hallway	24 m <sup>2</sup>	Swimming pool	42 m <sup>2</sup>
Living-dining room	93 m <sup>2</sup>	Terrace	106 m <sup>2</sup>
Toilet	06 m <sup>2</sup>	Garden	442,50 m <sup>2</sup>



DEVELOPED BY:



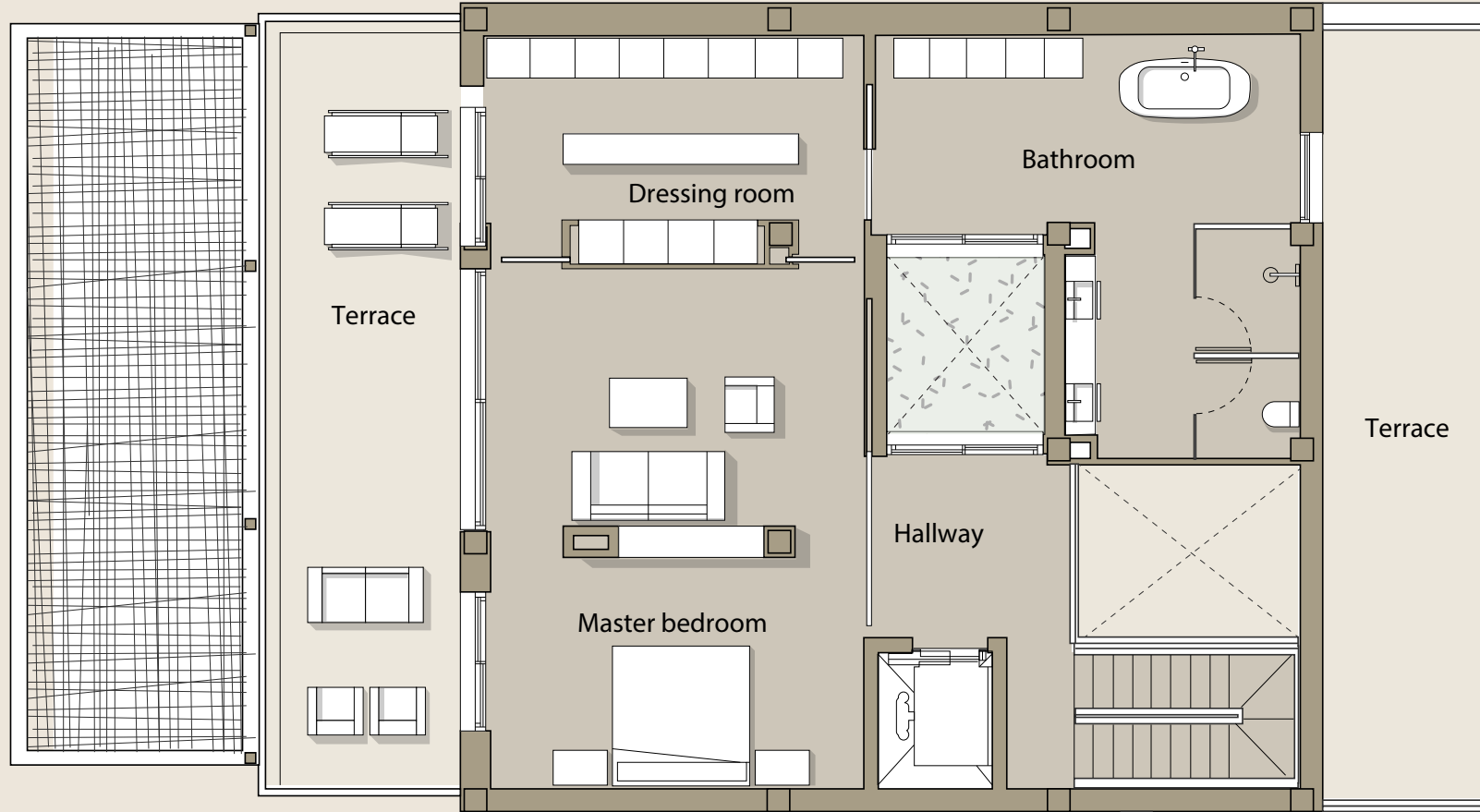
This plan is not a contractual document, it is merely illustrative and subject to technical, legal or commercial modifications by the project management team or the competent authority as a result of future project developments. The indicated surface areas of rooms and other elements are approximate and may be subject to verification or modification in future technical projects. The furniture shown in the interior and exterior plans is not included, and the fixtures and fittings in the properties will be as specified in the corresponding building specifications. All information and documentation shall be provided in accordance with Royal Decree Law 515/1989 and other complementary regulations, whether EU, national or regional.



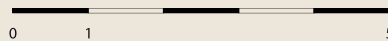
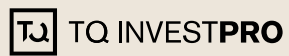
PATMORE  
RESIDENCE

FIRST FLOOR - 95 m<sup>2</sup>

Bathroom	28,50 m <sup>2</sup>	Dressing room	16m <sup>2</sup>
Hallway	10 m <sup>2</sup>	Terrace	31 m <sup>2</sup>
Master bedroom	41,50 m <sup>2</sup>	Rear terrace	26,50 m <sup>2</sup>



DEVELOPED BY:



This plan is not a contractual document, it is merely illustrative and subject to technical, legal or commercial modifications by the project management team or the competent authority as a result of future project developments. The indicated surface areas of rooms and other elements are approximate and may be subject to verification or modification in future technical projects. The furniture shown in the interior and exterior plans is not included, and the fixtures and fittings in the properties will be as specified in the corresponding building specifications. All information and documentation shall be provided in accordance with Royal Decree Law 515/1989 and other complementary regulations, whether EU, national or regional.

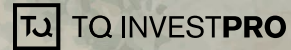


# PATMORE

RESIDENCE

[www.patmore.es](http://www.patmore.es)

DEVELOPED BY:



RESIDENTIAL RESORT UNDER CONSTRUCTION - ENERGY EFFICIENCY LABEL PENDING.

\*Images are not contractual and are merely illustrative, subject to technical, legal or commercial modifications by the project management or competent authority. The computer-generated images of the façades, communal areas and other spaces are for guidance only and may be subject to verification or modification in the technical projects. The furniture shown in the interior and exterior plans is not included, and the fixtures and fittings in the properties will be as specified in the corresponding building specifications. All information and documentation shall be provided in accordance with Royal Decree Law 515/1989 and other complementary regulations, whether EU, national or regional. A complaints book is available to customers, as duly communicated and displayed in our offices. Version April 2024