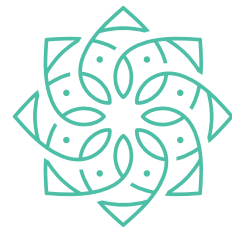


DEVELOPED BY:



ESTELA  
HOUSE



PATMORE  
RESIDENCE







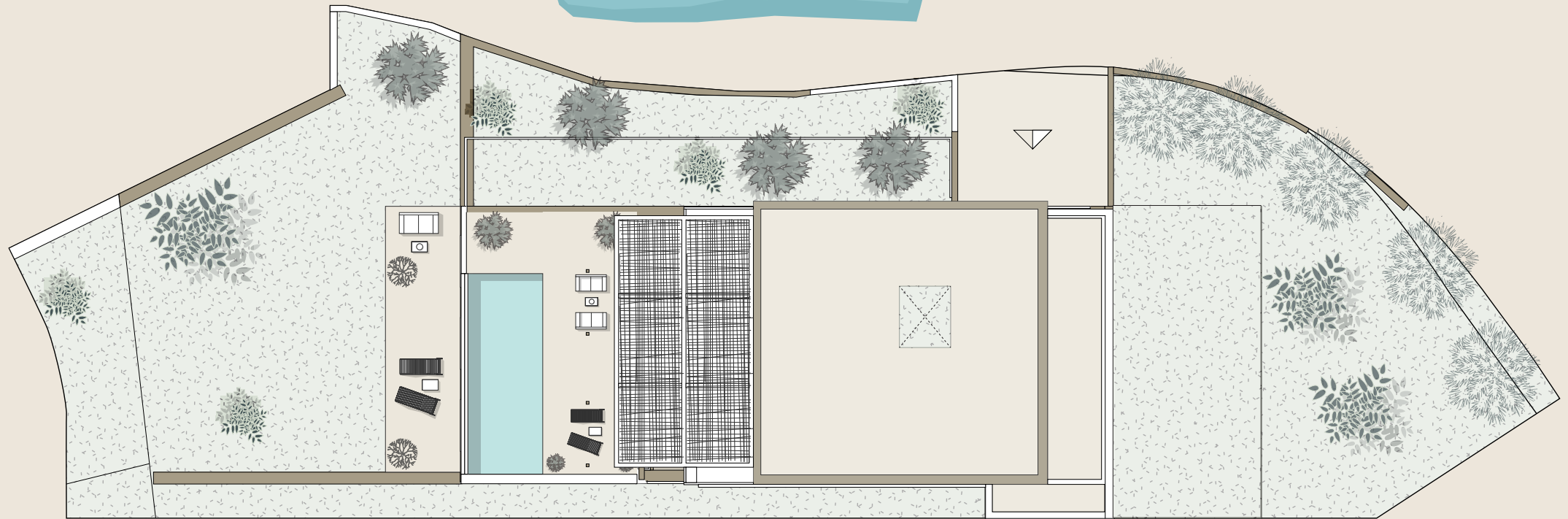
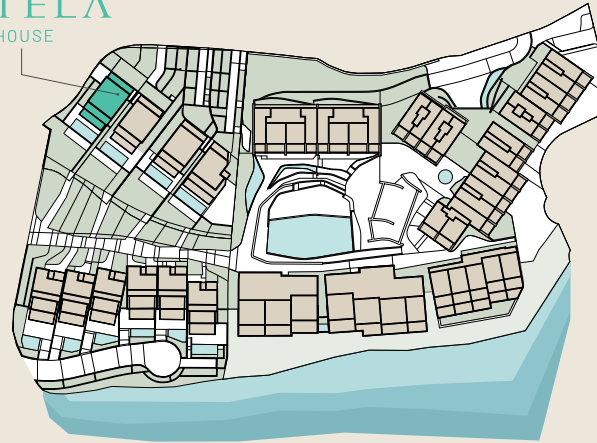


PATMORE  
RESIDENCE

# ESTELA HOUSE

Constructed surface area	788,31 m <sup>2</sup>
Private outdoor surface area	796,86 m <sup>2</sup>

## GENERAL ARRANGEMENT PLAN



DEVELOPED BY:

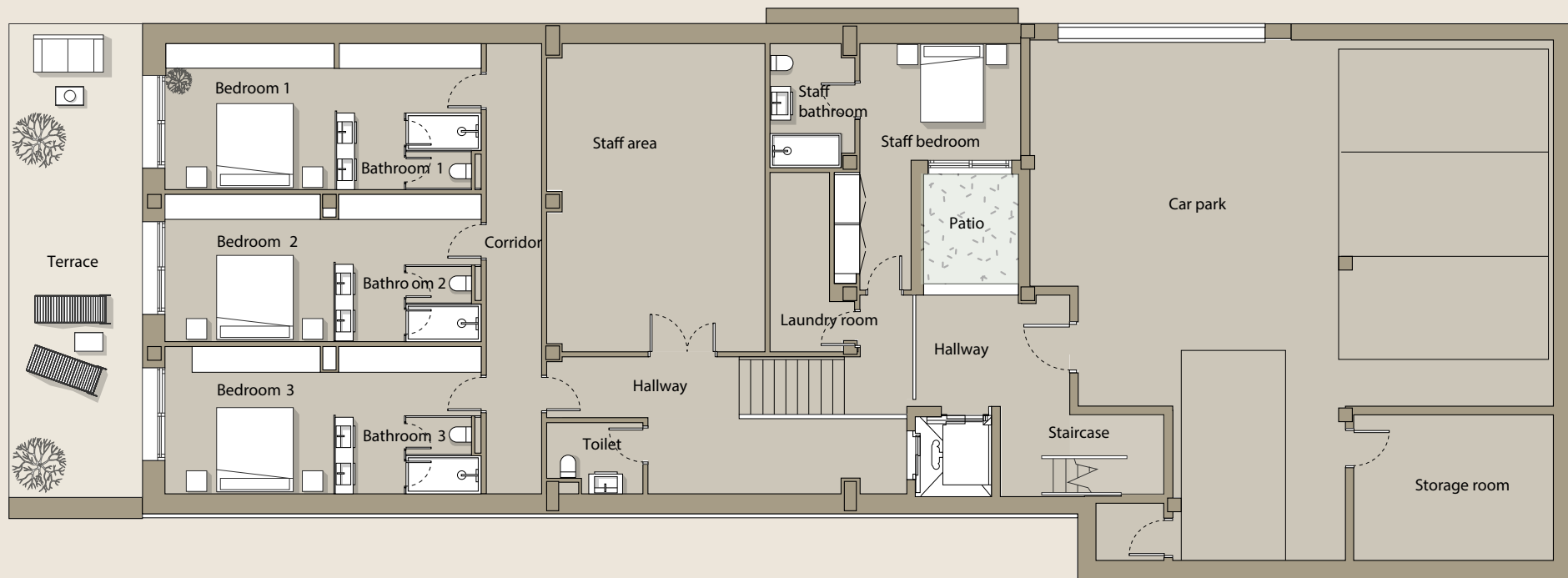


This plan is not a contractual document, it is merely illustrative and subject to technical, legal or commercial modifications by the project management team or the competent authority as a result of future project developments. The indicated surface areas of rooms and other elements are approximate and may be subject to verification or modification in future technical projects. The furniture shown in the interior and exterior plans is not included, and the fixtures and fittings in the properties will be as specified in the corresponding building specifications. All information and documentation shall be provided in accordance with Royal Decree Law 515/1989 and other complementary regulations, whether EU, national or regional.



## GARDEN FLOOR - 354 m<sup>2</sup>

Toilet	3,50 m <sup>2</sup>	Bedroom 3	19,50 m <sup>2</sup>	Staircase	7 m <sup>2</sup>
Bathroom 1	6 m <sup>2</sup>	Corridor	14,50 m <sup>2</sup>	Laundry room	6,50 m <sup>2</sup>
Bathroom 2	6 m <sup>2</sup>	Staff area	38 m <sup>2</sup>	Patio	5,50 m <sup>2</sup>
Bathroom 3	6 m <sup>2</sup>	Car park	121,50 m <sup>2</sup>	Storage room	16,50 m <sup>2</sup>
Hallway	21 m <sup>2</sup>	Staff bathroom	5,50 m <sup>2</sup>	Storage room	2 m <sup>2</sup>
Bedroom 1	20 m <sup>2</sup>	Hallway	15 m <sup>2</sup>	Terrace	36,50 m <sup>2</sup>
Bedroom 2	19,50 m <sup>2</sup>	Staff bedroom	16 m <sup>2</sup>	Garden	183,50 m <sup>2</sup>



DEVELOPED BY:

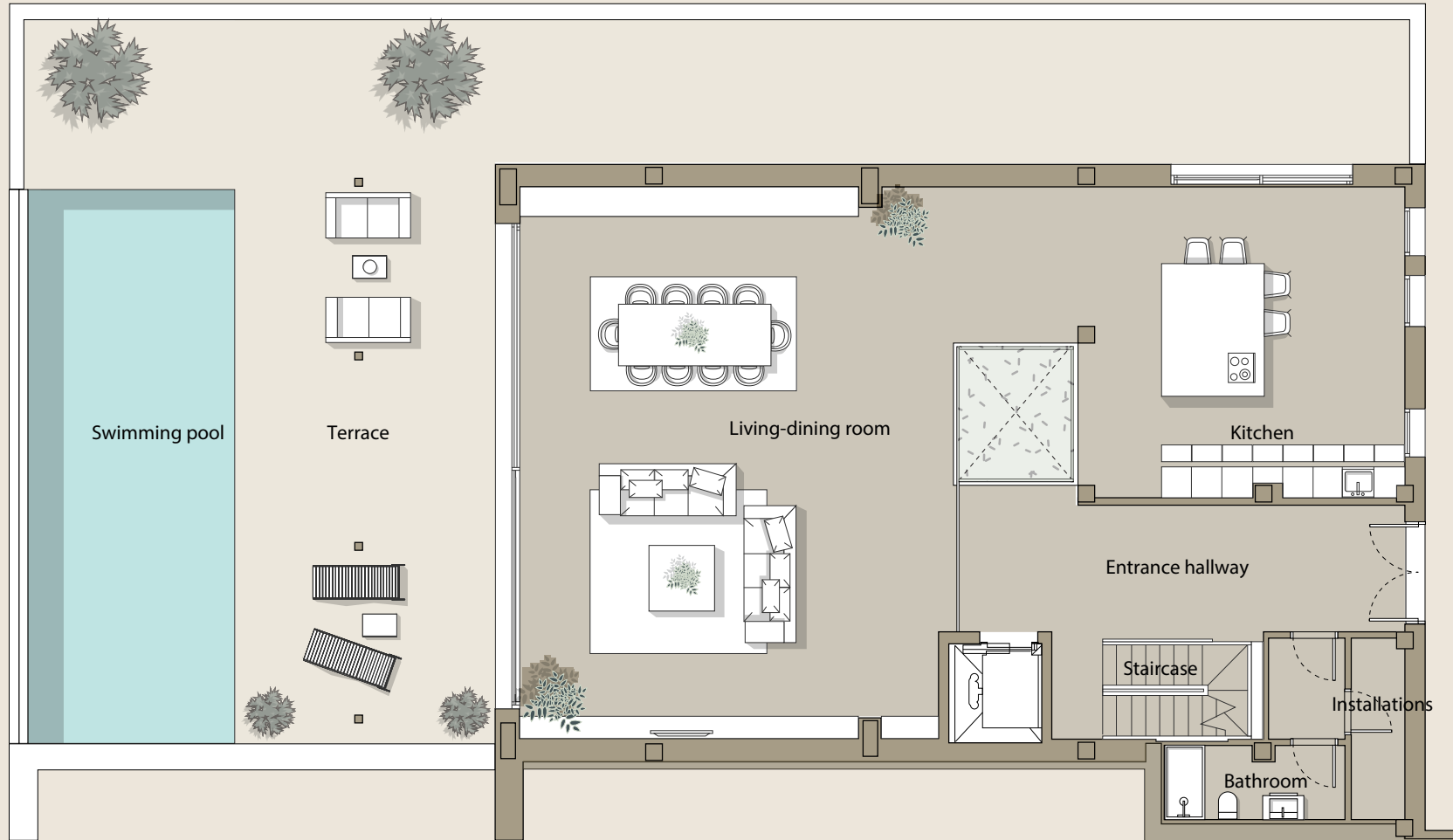




PATMORE  
RESIDENCE

## SWIMMING POOL FLOOR - 183,50 m<sup>2</sup>

Toilet	5 m <sup>2</sup>	Installations	3,50 m <sup>2</sup>
Kitchen	46,50 m <sup>2</sup>	Living-dining room	92,50 m <sup>2</sup>
Hallway	2,50 m <sup>2</sup>	Swimming pool	43 m <sup>2</sup>
Staircase	8,50 m <sup>2</sup>	Terrace	87 m <sup>2</sup>
Entrance hallway	23 m <sup>2</sup>	Garden	385,50 m <sup>2</sup>



DEVELOPED BY:



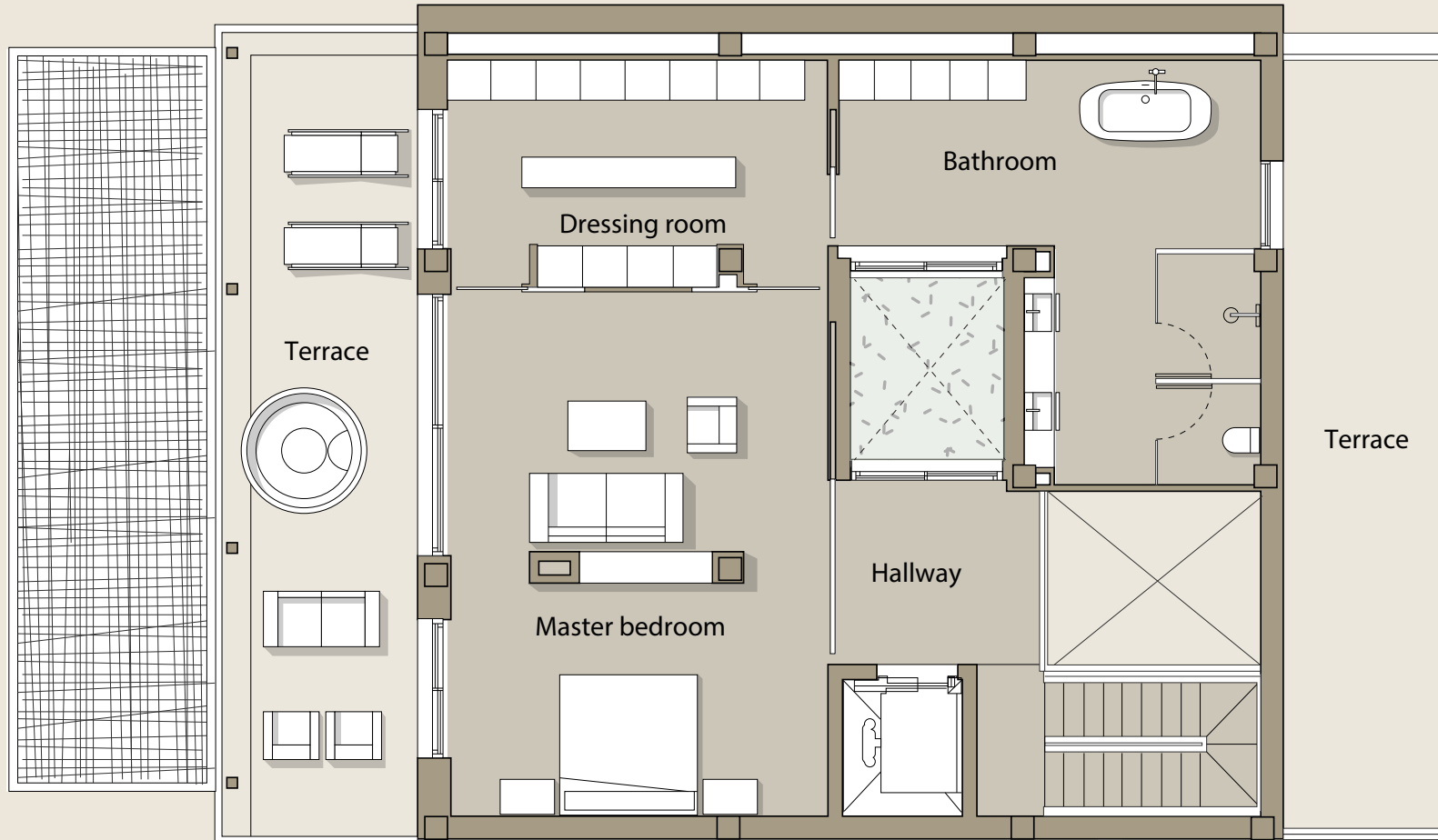
This plan is not a contractual document, it is merely illustrative and subject to technical, legal or commercial modifications by the project management team or the competent authority as a result of future project developments. The indicated surface areas of rooms and other elements are approximate and may be subject to verification or modification in future technical projects. The furniture shown in the interior and exterior plans is not included, and the fixtures and fittings in the properties will be as specified in the corresponding building specifications. All information and documentation shall be provided in accordance with Royal Decree Law 515/1989 and other complementary regulations, whether EU, national or regional.



PATMORE  
RESIDENCE

# FIRST FLOOR - 98,50 m<sup>2</sup>

Bathroom	28 m <sup>2</sup>	Dressing room	18 m <sup>2</sup>
Hallway	10 m <sup>2</sup>	Terrace	33 m <sup>2</sup>
Master bedroom	41 m <sup>2</sup>	Rear terrace	26,50 m <sup>2</sup>



DEVELOPED BY:



This plan is not a contractual document, it is merely illustrative and subject to technical, legal or commercial modifications by the project management team or the competent authority as a result of future project developments. The indicated surface areas of rooms and other elements are approximate and may be subject to verification or modification in future technical projects. The furniture shown in the interior and exterior plans is not included, and the fixtures and fittings in the properties will be as specified in the corresponding building specifications. All information and documentation shall be provided in accordance with Royal Decree Law 515/1989 and other complementary regulations, whether EU, national or regional.

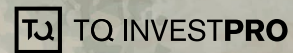


# PATMORE

RESIDENCE

[www.patmore.es](http://www.patmore.es)

DEVELOPED BY:



RESIDENTIAL RESORT UNDER CONSTRUCTION - ENERGY EFFICIENCY LABEL PENDING.

\*Images are not contractual and are merely illustrative, subject to technical, legal or commercial modifications by the project management or competent authority. The computer-generated images of the façades, communal areas and other spaces are for guidance only and may be subject to verification or modification in the technical projects. The furniture shown in the interior and exterior plans is not included, and the fixtures and fittings in the properties will be as specified in the corresponding building specifications. All information and documentation shall be provided in accordance with Royal Decree Law 515/1989 and other complementary regulations, whether EU, national or regional. A complaints book is available to customers, as duly communicated and displayed in our offices. Version April 2024